



Mercedes-Benz Club of America - Minuteman

TRI-ANGLES

MARCH 2025

IN THIS ISSUE:

➤ **WELCOME,
NEW MEMBERS!**

➤ **SPONSORS**

➤ **LETTER FROM
THE PRESIDENT**

Updates from Dean
Coclin.

➤ **FEATURED
ARTICLES FROM
MEMBERS**

➤ **RECENT EVENTS**

Images and updates
from our recent
outings.

➤ **UPCOMING
EVENTS**

2025 Calendar

➤ **BOARD OF
DIRECTORS**

➤ **MEMBERSHIP
RENEWAL
INFO**



Photo Courtesy of Denton Owen, @denton.drives

Spring has arrived, and with it comes a sense of new beginnings and fresh energy! Behind the scenes, we've been busy gathering new stories, curating photos and insights, and filling our calendar with exciting things to come. Your time, engagement, and connection mean a lot to us—thank you for being such an important part of our community.

Have you taken a scenic spring drive lately? Maybe you have tips for getting your vehicle ready for the warmer months, or thoughts on the latest trends in automotive innovation? We'd love to feature your insights in one of our upcoming issues! Share your stories with us anytime at hello@leiamowen.com.

Planning or hosting a club event this year? Send us the details and a few photos! It's a wonderful way to inspire and connect with fellow members of our Minuteman Section community. As we embrace this season of renewal and fresh adventures, we're reminded how grateful we are for you. Here's to new journeys, smooth roads, and bright days ahead!

Leia Owen
EDITOR

Welcome, New Members!

Thank you to all the new and returning members from our region who joined - or renewed their memberships with -the MBCA Minuteman Chapter in December, January, and February! Let's welcome:

John Miller
Gerald Fimiani
Derek Jordan

Are you one of our new members? We're happy to have you! Check out the upcoming events and other chapter information contained in this quarterly publication.

Have friends or fellow enthusiasts who might enjoy being part of our community? Invite them to join us! Sharing the fun makes every drive and event even better.

Please contact our team if you have any questions!

Thank you, sponsors!



EUROPEAN AUTO SOLUTIONS

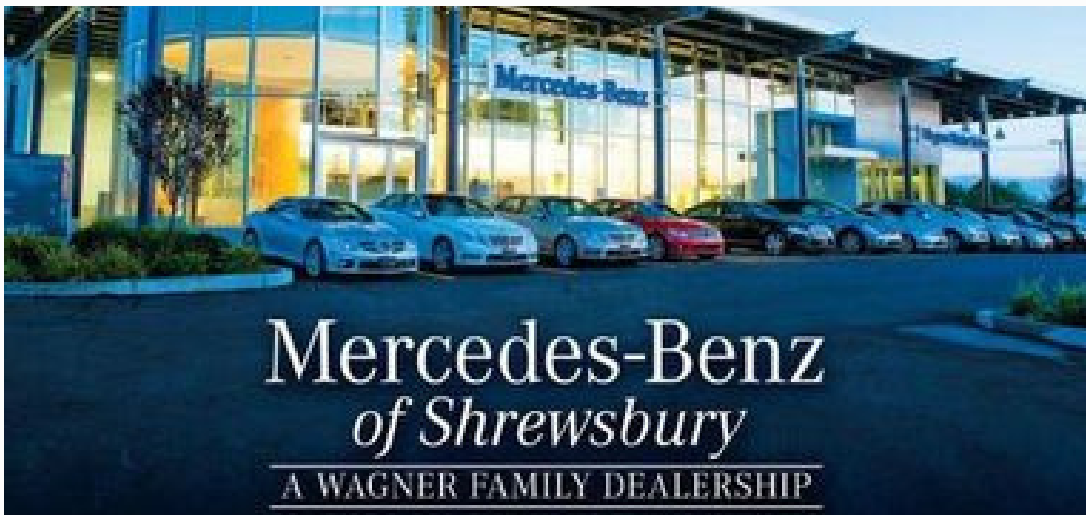
Integrity, Experience, and Craftsmanship for your Mercedes



Mercedes-Benz
Westwood



Mercedes-Benz
of Portsmouth



I arrived in Florida in early January to find my 2011 E350 diesel under the car cover and connected to the battery tender. After removing both, she started right up, no problem. I inflated the tires a bit and took it out on the road. After a few miles, I thought I heard some noise when I turned the steering wheel, but I chalked it up to needing to be driven a bit. However, it didn't go away. Removing the engine cover, I checked the power steering fluid and found it to be nearly empty! However, I could not find any stains on the garage floor which puzzles me as to where this fluid went? I quickly filled the reservoir and luckily, it's been working fine since. I'll be keeping an eye on it while I'm in Florida and will have to remember to check it again next year.

I'm excited to see the events that Ulysses and Heather from our events team have come up with. You'll find a list in this issue but coming up is a brand-new event at the New England Air Museum, near Bradley Airport. This looks really special, and I encourage our members to check it out and sign up here: <https://mbca.glueup.com/event/new-england-air-museum-137450/>

Following this, we have the popular EAS Open House, a member favorite. If you've never been, this is a chance to see your car on the lift and go thru it with an expert mechanic, at no cost! No wonder it's so popular.

For the rest of the year, there are a mixture of new and classic events that are special to our club. I'm really looking forward to trying some of these new ones (especially the wine tasting!).

In Q4, we will be hosting the Farberrallye. Plans are underway to locate this in Western MA and more details will be forthcoming. Rallye master Ernie Fancy is busy planning an exciting and scenic route, especially given this will take place during peak fall foliage.

The club is looking for more sponsors to help underwrite events, advertise in our newsletter, or co-sponsor our rallye. If you know of a business that may be interested, please put them in touch with me.

Member stories are my favorite part of our newsletter. Steve Rankel has been faithfully contributing as well as Ed Owen, Heather Renzoni and Robert Rose. If you have a trip that you recently took with your Mercedes and want to tell everyone about it, this newsletter is the perfect venue. Make sure you send pictures as well!

Looking forward to 2025 and your participation in our upcoming events.

A stylized, handwritten signature in dark ink that reads "Dean". The signature is fluid and cursive, with a large initial "D" and a trailing flourish.

Dean Coclin
Minuteman Section President

In Memory of our Member TOM OWEN

PASSED AWAY JANUARY 23, 2025
HUDSON, MASSACHUSETTS



It is with a heavy heart that I announce the passing of my Father, Thomas Owen, who died peacefully in our house last month. My car guy inspiration, Jeopardy foe, housemate, fellow epicurean, rally co-pilot, voice of reason (sometimes), Granpa to my children, and as the late Tom Larsen called him “my brother”.

A true “baby boomer”, he was born in Cornwall, New York in 1946 as the youngest of four siblings. He made his career in Cable Television and we traveled and moved a lot as a young family when my Dad was setting up new cable systems in different regions. Thankfully we finally settled and set up roots here in Massachusetts.

As a developing car guy in the 50’s and 60’s he owned a lot of GM products including a ‘57 Corvette and a ‘55 Chevy Belair with a custom big block 409. In the mid-sixties he was part owner and head mechanic of a drag team with a ‘57 Chevy that held the national speed record for a month. But of course I only heard the story a few times in my life about the ‘66 GTO he had to give up for the birth of me.

Later in life he learned to appreciate German cars. He was a member of the Minuteman Section, an avid Mercedes-Benz fan, a car scene regular, and one of our best judges at Germanfest for the past 14 years. He was also the head detailer at EAS for the past 12 years.

I have been thinking a lot lately about those quintessential moments in life that define a father and a son relationship. Life lessons of the good and the bad that help define who we become. I am so fortunate to have a father who invested in me and who was present and supportive. Later in life we had the opportunity to become closer, as did his relationship with my children, and I will forever be grateful for that. He will be missed.



-Ed Owen

FROM THE WORDS OF ONE OF OUR GREAT
MASSACHUSETTS NATIVES,
HENRY WADSWORTH LONGFELLOW:

“LIVES OF GREAT MEN ALL REMIND US
WE CAN MAKE OUR LIVES SUBLIME,
AND, DEPARTING, LEAVE BEHIND US
FOOTPRINTS ON THE SANDS OF TIME”

A close-up, slightly blurred photograph of a person's hand resting on a steering wheel. The hand is wearing a Rolex Oyster Perpetue Datejust watch with a black dial, gold and silver-tone metal bracelet, and a fluted bezel. The steering wheel is light-colored and features the Mercedes-Benz logo in the center. The background is out of focus, showing a road with yellow lane markings and a blurred car in the distance.

From Our Members

Photo Courtesy of Denton Owen, @denton.drives

DID A MERCEDES SL CHOOSE YOU?

(+ A POP QUIZ FROM THE 1ST 60 YEARS OF SL PRODUCTION)

by Steve Rankel



Some of us choose the cars we love. Sometimes the car chooses us.

For example, it wasn't until high school that my love of Turbo Saab's was fanned into flame, stoked by my dad's NYC-based salesman who drove one. Rose/silver quartz, four doors, velvet heated seats, a sliding steel sunroof (and of course, the ever-vigilant Escort radar detector =).

As I sat in the car, I remember thinking: "this guy is 6'5" and he can fit in this car? And look at all those gauges!"

The same thing happened to me when I first RECOGNIZED my uncle Bernhard's earliest Mercedes. I say recognized because sometimes we can be around special people or things but we don't appreciate them until something wakes us up (yes wife, I'm referring to you!)

The incredible dark blue MB color that looked great no matter what the angle of light. A manual transmission, which allowed a young boy to enjoy the growling of the engine as it went through the gears. That unique German car smell, unlike anything in American or Japanese cars. The wool seat covers, because MB-Tex and leather just got too hot in the summer and too cold in winter.

DID A MERCEDES SL CHOOSE YOU? (+ A POP QUIZ FROM THE 1ST 60 YEARS OF SL PRODUCTION)

by Steve Rankel

Maybe you have a memory, a series of smells, textures or sounds that evoke a nostalgic feeling for you?

I first thought about this years ago when reading a book intro by Roger Welsch, a university professor and regular on the TV show CBS Sunday Mornings with Charles Kuralt: "We don't choose the vehicles we love, they choose us. It's often because a parent, relative or neighbor owned a certain vehicle that a seed is planted in our hearts. Often at a young age." Yup. So: were you bitten by the SL bug because someone important to you owned one?

Maybe you got to drive in a relative's SL when you visited them? Maybe your grandfather had one, and while you were too young to drive you weren't too young to long for the day that you could? Maybe you have vivid memories of your "favorite" car: where you were, who was there, what the weather was like, what the interior or trunk or engine bay smelled like, where the sun was in the sky? Or maybe you are someone who chose the SL just because you liked it. Regardless of why you became a fan, here's a slightly different look at the SL: from how the factory tracked what went out the door, and when.

Oftentimes the "volume" of classic cars is reported according to the # of vehicles assigned a particular model year, regardless of when the car is actually manufactured. But this is the first production table I've seen listing every single SL model produced before 2011, by production date, chassis number and engine type.

So, enjoy this quiz and maybe you'll notice some fun patterns you never recognized before. I've included the table for those who geek out like I do and study such things.

PRODUCTION FIGURES

FROM W198 TO R230 MODEL IN NUMBERS

W198 300SL

Year	1954	1955	1956	1957	1958	1959	1960	1961	1962	1963	Total
Coupe	146	867	311	76							1,400
'illy Infr	24	5									
Roadster				554	324	211	249	250	244	26	1,858
Production											3,258

W121 190SL

Year	1955	1956	1957	1958	1959	1960	1961	1962	1963	Total
Coupe	20	1,367	1,521	1,340	1,998	2,565	2,584	1,560	72	13,007
Roadster	1,707	2,665	1,811	1,382	1,951	1,412	1,228	686	32	12,874
Production										25,881

W113 SL

Year	1963	1964	1965	1966	1967	1968	1969	1970	1971	Total
230SL	1,465	6,911	6,325	4,945	185					19,831
250SL				17	5,177	2				5,196
280SL					143	6,930	8,047	7,935	630	23,885
Production										48,912

R107 SL

Year	1970	1971	1972	1973	1974	1975	1976	1977	1978	1979	1980	1981	1982	1983	1984	1985	1986	1987	1988	1989	Total
280SL					287	1,020	1,099	1,347	1,536	2,155	2,429	2,628	3,165	3,393	3,529	2,838					25,436
350SL	3	4,802	4,778	1,647	574	390	540	650	743	934	243										15,304
450SL		2,131	7,473	8,654	6,093	6,011	6,825	8,110	7,434	8,184	5,583										66,298
380SL								3,347	9,470	9,926	11,189	11,115	8,144								53,290
500SL								501	899	1,287	1,563	1,793	2,719	1,192	768	739	341				11,812
300SL														1,356	4,331	3,261	2,746	2,848			13,742
420SL														215	1,083	479	325	126			2,148
560SL														3,907	13,788	14,770	11,531	5,351			48,347
Production																					237,287

R129 SL

Year	1988	1989	1990	1991	1992	1993	1994	1995	1996	1997	1998	1999	2000	2001	Total
300SL	27	407	2,236	3,115	4,543	1,692									12,020
SL280					3	1,927	2,961	2,178	1,556	1,316	378				10,319
SL280 V6										3	584	647	302	158	1,704
300SL-24	28	1,507	7,902	7,833	7,417	2,297									26,984
SL320					3	4,688	6,795	7,497	6,872	4,832	1,536				32,223
SL320 (M112)										3	2,317	2,297	1,657	796	7,070
500SL	31	3,413	10,649	15,053	9,483										38,629
500SL/SL500					2,882	6,090	6,172	7,538	6,097	8,118	4,501				41,198
SL500 (M113)								5,619	8,884	5,755	3,464				23,704
600SL/SL600				3	2,187	2,066	1,526	1,112	1,249	1,164	821	557	286	198	11,089
Production															204,940

R230 SL

Year	2000	2001	2002	2003	2004	2005	2006	2007	2008	2009	2010	2011	Total
SL200/SL300								29	574	421	435	455	1,914
SL350	7	18	1,542	8,002	6,998	3,669	317						21,543
SL350						42	3,088	2,668	338				6,136
SL350							54	3,047	1,820	1,065	712		8,698
SL500	51	8,036	24,035	17,859	12,893	10,210	494						72,778
SL500/SL550						62	8,439	5,571	7,783	1,156	2,804	1,163	26,778
SL600			30	1,453	1,106	493	4						3,086
SL600						29	379	223	216	58	25	8	930
SL55 AMG	54	6,350	6,684	3,921	1,972	41							18,022
SL55 AMG						23	1,575	948	7				2,553
SL63 AMG							51	3,044	807	680	358		4,940
SL65 AMG						860	857	283	382	355	55		3,055
Production													189,433

Data from the book Mercedes-Benz SL: Faszination seit sechs Jahrzehnten

DID A MERCEDES SL CHOOSE YOU?

(+ A POP QUIZ FROM THE 1ST 60 YEARS OF SL PRODUCTION)

by Steve Rankel

Q1: In what calendar year were all three W113 pagoda roof SL's simultaneously manufactured (230SL, 250SL, 280SL)?

- A) 1965
- B) 1966
- C) 1967
- D) 1968

Q2: Which Mercedes works driver took delivery of the only 230 SL with a factory-installed 250 engine and sunroof in the hardtop?

- A) Juan Manuel Fangio
- B) Niki Lauda
- C) Stirling Moss
- D) Lewis Hamilton

Q3: What was the lowest annual production volume for any year SL + engine combination ever produced?

- A) Nine
- B) Five
- C) Two
- D) One

Q4: Which platform + engine holds the record for the highest number of SL's produced in a calendar year?

- A) W113 280 SL
- B) R107 450 SL
- C) R129 500 SL
- D) R230 SL 500

Q5: Which is the rarest W113 SL pagoda, based on total production numbers?

- A) 230 SL
- B) 250 SL
- C) 280 SL
- D) All of the above

Q6: Which SL has the longest production run in the same chassis number and engine size?

- A) R107 280 SL
- B) R107 450 SL
- C) R129 SL 600 SL
- D) R230 SL 500

Q7: Which SL enjoys the record for the longest production run of any SL platform—regardless of engine size?

- A) R107
- B) R129
- C) R230
- D) R231

PREPPING YOUR CAR FOR SPRING

by Denton Owen



As the weather warms up and we start thinking about road trips, rallyes, and weekend drives, it's the perfect time to make sure your Mercedes-Benz is ready to roll. Winter can be tough on your car, even if it's been sitting in the garage. A quick check now can save you from unexpected breakdowns and keep your spring adventures smooth.

Here's what I recommend you inspect before hitting the road:

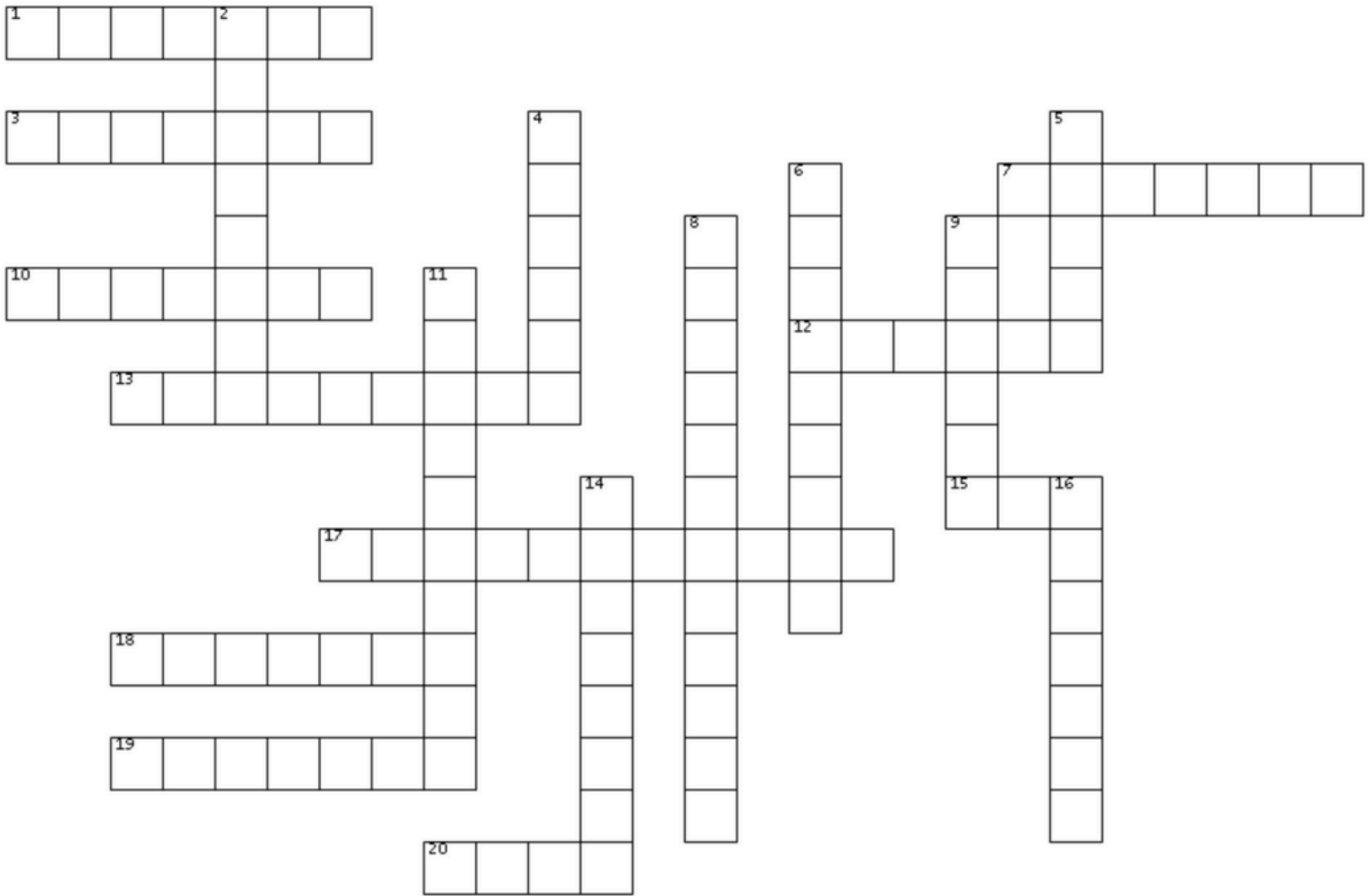
- **Tires:** Check for tread wear, dry rot, and proper pressure. Cold temps can mess with PSI, so make sure everything's back in balance.
- **Battery:** If your car sat idle this winter, the battery could be low or starting to weaken. Test it or bring it in for a quick check.
- **Brakes:** Listen for squeaks and feel for softness or vibration. Don't ignore signs your brake system needs attention.
- **Fluids:** Top off or replace engine oil, coolant, and windshield washer fluid. Spring allergies? Clean washer jets help keep pollen off your windshield.
- **Belts + Hoses:** Cold weather can make rubber brittle. A visual inspection can catch cracks or frays before they become major problems.
- **Wipers:** Replace wiper blades if they're streaky or chattering. You'll need clear vision when those spring showers hit.

And while you're at it, give your car a deep clean inside and out. Salt and sand can do a number on your undercarriage and paint—nothing beats that first shiny spring drive.

If you're gearing up for a rallye or weekend cruise, swing by the shop for a full inspection. I'll make sure your Mercedes is road-trip ready, so you can enjoy the journey with peace of mind.

Crossword Puzzle

by Leia Owen



ACROSS

1. Ultra-luxury line of vehicles under the Mercedes-Benz brand.
3. Mercedes-Benz technology for clean diesel engines.
7. Long-distance driving for pleasure, often with a club.
10. Classic 1960s Mercedes-Benz sedan, named for its small rear design accents.
12. A spirited event where Mercedes-Benz enthusiasts gather for scenic drives and camaraderie.
13. New England club chapter sharing its name with a revolutionary militia member.
15. Drivetrain where the rear wheels do the pushing.
17. This dashboard instrument tells you how fast you're going.
18. The structural framework that supports the car's body and components.
19. The founding company of Mercedes-Benz, merged with Benz & Cie.
20. The iconic three-pointed _____ of Mercedes-Benz.

DOWN

2. German highway famous for sections with no speed limit.
4. Nickname for the rounded-body Mercedes-Benz models of the 1950s.
5. A car with a fixed roof, two doors, and often a sporty design.
6. The Mercedes-Benz term for a convertible.
8. AMG headquarters town, where performance engines are handcrafted.
9. Arrow: Legendary Mercedes-Benz race cars known for their sleek metallic finish (two words).
11. Mercedes-Benz term for a supercharged engine.
14. A sporty, open-top car built for two.
16. The joy is in the _____, not just the destination.

RADWOOD AT THE AMELIA 2025

by Ed Owen



According to their website "RADwood is a celebration of '80s and '90s automotive lifestyle. The car show that blends period correct dress with automotive awesomeness. A period correct event for cars, trucks, and bikes from 1980-1999 that captures the essence of a bodacious era." One of our newest spring rituals is to participate in the growing RADwood show at The Amelia on the grounds of the Ritz-Carlton Amelia Island, Florida.

We acquired this 1984 500SEL AMG W126 project car in early 2024, and over the past year we brought it up to speed. Having a deadline such as a show date certainly helps to keep the project moving through the shop. So what better show/deadline date for this particular car than among its brethren in RADwood at The Amelia and what better test than over 1500 miles of seat time.

AMG (Aufrecht, Melcher, Großaspach) was founded in the mid sixties when founders Hans Werner Aufrecht and Erhard Melcher were working for Daimler-Benz in the Racing Development Department and left when the company put the kibosh on all motorsports endeavours. One of their last projects at Daimler-Benz was the development of a race motor for a 300SE and in 1965 Manfred Schiek piloted that car to 10 wins in the German Touring Car Championship. With a growing reputation for performance they opened up 'AMG Engine Production and Development Limited' (AMG Motorenbau- und Entwicklungsgesellschaft mbH in German) in the town of Burgstall, very close to Stuttgart. Their first real breakthrough into international recognition came in 1971 when their 300SEL 6.8 liter race car named the 'Rote Sow' (Red Pig) won its class and second overall in the 1971 24 Hours of Spa in Stavelot, Belgium.

RADWOOD AT THE AMELIA 2025

by Ed Owen



From there, their reputation grew along with their business and as a result, they moved to a bigger facility in Affalterbach in 1976. The first co-branded vehicle between AMG and Daimler-Benz was unveiled in 1993 in the form of the C36 AMG. By 1999 Daimler-Benz owned the majority shares of AMG and took over 100% ownership in 2005.

Our pre-merger W126 AMG was delivered new in Frankfurt in April of 1984 then upgraded by AMG in the fall of that same year. There, they transformed this Flagship S-Class into the most sinister looking land-yacht around. A 'most excellent' representation of the style and attitude of the big 80's. It was imported to the US in 2015 into the state of Michigan. With only 43k miles, it was surprisingly pretty rough and battle-scarred when we took possession. Paintwork, interior work, and plenty of mechanical work was required to bring it up to our specifications. Thankfully the RADwood deadline worked and we were able to participate in the fun, including Denton's period-correct outfit! Bonus for a completely trouble free drive....shout out to the EAS technicians!





Educational Foundation

There's an Easy Way To Give. **Donate Your Vehicle.**



To learn more, call or visit:
855-500-7433
careasy.org/nonprofit/mbcaef

Give your used vehicle a new purpose when you donate it to Mercedes-Benz Club of America Educational Foundation. Donating your vehicle is easy and the pick-up is free.

Vehicle donations are tax-deductible!*

Our vehicle donation program works to get the highest return per vehicle and handles all the paperwork, too!

*Consult your tax advisor



2025 Calendar

APRIL

S	M	T	W	T	F	S
		1	2	3	4	5
6	7	8	9	10	11	12
13	14	15	16	17	18	19
20	21	22	23	24	25	26
27	28	29	30			

New England Air Museum
Sunday, April 27th
Arrive by 10:30am
 @Granby, CT

MAY

S	M	T	W	T	F	S
				1	2	3
4	5	6	7	8	9	10
11	12	13	14	15	16	17
18	19	20	21	22	23	24
25	26	27	28	29	30	31

EAS Open House & Tech Session
Saturday, May 3rd
9am - 1pm
 @European Auto Solutions, Waltham MA
Drive to Brattleboro, VT - Latchis Theater
Saturday, May 31st
Details TBA

JUNE

S	M	T	W	T	F	S
1	2	3	4	5	6	7
8	9	10	11	12	13	14
15	16	17	18	19	20	21
22	23	24	25	26	27	28
29	30					

Stonington CT Drive
Saturday, June 28th
9am - 1pm
Details TBA

JULY

S	M	T	W	T	F	S
		1	2	3	4	5
6	7	8	9	10	11	12
13	14	15	16	17	18	19
20	21	22	23	24	25	26
27	28	29	30	31		

Boston Wine Tour
July 19th or 20th
Details TBA

AUGUST

S	M	T	W	T	F	S
					1	2
3	4	5	6	7	8	9
10	11	12	13	14	15	16
17	18	19	20	21	22	23
24	25	26	27	28	29	30

31
Newport Polo
Saturday, August 9th
3pm - 6pm
 @Newport Polo, Portsmouth, RI

SEPTEMBER

S	M	T	W	T	F	S
	1	2	3	4	5	6
7	8	9	10	11	12	13
14	15	16	17	18	19	20
21	22	23	24	25	26	27
28	29	30				

Mercedes Day (GermanFest)
Sunday, September 14th
9am-1pm
 @Larz Anderson Auto Museum
Member Event @ MB Shrewsbury
Wednesday, September 24th
9am-1pm
Details TBA

OCTOBER

S	M	T	W	T	F	S
			1	2	3	4
5	6	7	8	9	10	11
12	13	14	15	16	17	18
19	20	21	22	23	24	25
26	27	28	29	30	31	

Farberallye XLVII
October 24th - 26th
 Chicopee, MA
Details TBA

NOVEMBER

S	M	T	W	T	F	S
						1
2	3	4	5	6	7	8
9	10	11	12	13	14	15
16	17	18	19	20	21	22
23	24	25	26	27	28	29

30
Cars & Coffee
Saturday, November 8th
Details TBA

DECEMBER

S	M	T	W	T	F	S
	1	2	3	4	5	6
7	8	9	10	11	12	13
14	15	16	17	18	19	20
21	22	23	24	25	26	27
28	29	30	31			

Date & Details TBA
(December)
Holiday event and annual meeting

UPCOMING EVENTS

New England Air Museum



**Join us for a unique museum tour on
Sunday, April 27th -11:00am to 12:15pm
@36 Perimeter Rd
Windsor Locks, CT 06096**

PLEASE REGISTER HERE IF YOU PLAN TO PARTICIPATE

We will meet at the New England Air Museum for the tour which begins at 11am. Please arrive no later than 10:30 so we can all enter the museum together for our tour. Afterwards, we will drive to a local restaurant for a no host lunch.

DEADLINE TO PURCHASE IS APRIL 13th!

Note: Our price includes admission AND the tour. The prices on their website do not include the tour.

UPCOMING EVENTS



ANNUAL EAS OPEN HOUSE & TECHNICAL SESSION

Come celebrate the arrival of Spring at European Auto Solutions' Annual MBCA Minuteman Section Open House/Tech Session, on Saturday, May 3rd , 2025 from 9:00 am to 1:00 pm.



- Each attendee will be given 15 minutes of lift time for personal inspection of their Mercedes-Benz with one of our technicians to both learn more about the vehicle and to have it checked for the upcoming open road season
- Come check out some of E.A.S.'s current projects
- Quality door prizes
- Refreshments provided

So whether you want to check out and learn about the undercarriage of your Mercedes-Benz, check out the eclectic mix of vehicles that show up, or just share in the fun with other Mercedes-Benz enthusiasts, make sure you come out to E.A.S for MBCA Minuteman Section Open House/Tech Session on May 18th!

There is No Charge for this event

Please RSVP to Ed Owen 781-642-0667 / europeanautosolutions@gmail.com

MARK YOUR CALENDARS

Drive to Brattleboro, VT



Complimentary guided tour of the Latchis Theater designed in an art deco style, along with mural paintings and mosaic floors. No host lunch to follow.

Details of drive routes, restaurant locations, etc. will be shared soon!

Is it time **TO RENEW YOUR MEMBERSHIP?**

YOUR MEMBERSHIP TODAY RENEW YOUR MEMBERSHIP TODAY RENEW YOUR MEMBERSHIP TODAY RENEW YOUR MEMBERSHIP TODAY

Don't miss out on our upcoming events and other member benefits!

RENEWING YOUR MEMBERSHIP IS EASY!

1. Renew from the email reminder that comes in your email *
2. Log into your MBCA account and Renew from your Membership profile *
3. Mail a check to the National Business Office:
 - a. Mercedes-Benz Club of America
 - b. 10 Boulder Crescent St, Suite 200
 - c. Colorado Springs CO 80903
4. Call the National Business Office and renew over the phone Tues-Thurs: 9 am - 3 pm MT Phone: 719.633.6427

* 60 days before membership expiration, must log into mbca.org

Logging into your Glue Up Account with your MBCA login credentials. If you have not established your MBCA login, you can easily register by clicking on "Register".

⚠ If the system warns you that the email is already linked to an existing Glue Up account and you forgot your password, click "forgot password" to recover it before logging in.

RENEW YOUR MEMBERSHIP TODAY RENEW YOUR MEMBERSHIP TODAY RENEW YOUR MEMBERSHIP TODAY RENEW YOUR MEMBERSHIP TODAY RENEW YOUR MEMBERSHIP TODAY RENEW YOUR MEMBERSHIP TODAY RENEW YOUR MEMBERSHIP TODAY RENEW YOUR MEMBERSHIP TODAY RENEW YOUR MEMBERSHIP TODAY RENEW YOUR MEMBERSHIP TODAY

Minuteman Leadership Team:

President

Dean Coclin

dean.j.coclin@verizon.net

Vice-President

Barry O'Neill

barry056@gmail.com

Treasurer & Secretary

Courtland Brannen

Phone: 617-970-8156

courtlandbrannen@gmail.com

Publishing Committee / Newsletter Editor & Online Marketing Communications

Leia Owen

Phone: 781-642-0664

hello@leiamowen.com

Web Master & Membership Director

Dean Coclin

dean.j.coclin@verizon.net

Past President: Edward Owen

Director-at-Large

Ernie Fancy

fancyer@cox.net

Northeast Regional Director

Drew Webb

rdswebb@gmail.com

TRI-ANGLES

Tri-Angles is the newsletter published quarterly for the MBCA-Minuteman Section, Mercedes-Benz Club of America.

Neither editorial content nor advertising implies endorsement of any product or service by the Mercedes-Benz Club of America, its sections, or MBUSA. The publisher assumes no liability for errors in advertisements.

Please direct advertising inquiries to:

Leia Owen

Phone: 781-642-0664

hello@leiamowen.com

Members may run classified advertisements free of charge.

Send email changes to:

MBCA, National Business Office

1907 LeLaray St. Colorado Springs, CO 80909

Tel. 800-637-2360

Email advertisements to:

hello@leiamowen.com

Copy Deadlines: 15th of February, May, August, and November.

Leia Owen/Editor & Publisher

Board of Directors:

Ken Bourque

Phone: 781-326-5158

Kenbourque32@gmail.com

Rich Garick

Phone: 603-898-3980

rgarick@comcast.net

Courtland Brannen

Dean Coclin

Ulysses deGuzman

Ed Owen

Leia Owen

Heather Renzoni

Answer Key: SL QUIZ

Q1:

Answer: 1967.

185 230 SL's, 5,177 250 SL's, and 143 280 SL's were produced in 1967.

Q2:

Answer: Stirling Moss.

A special 230 SL with a 2.5 liter engine was produced for Stirling Moss, who raced for Mercedes in the 1950s. Alfred Neubauer, former head of Mercedes-Benz racing, can be seen in a publicity photo waving a flag as Moss and his wife drove off from Sindelfingen in their new car. Incidentally, the same car was reported by Classic Mercedes Magazine as being sold at auction in the UK several years ago for over \$250,000.

Q3:

Answer: Two.

In 1968 just two W113 Pagoda 250 SL's were made, tied with 1997 when two R129 SL 500s were produced. These are the lowest annual production figures for any model in the first 65 years of SL history. Despite the 280SL holding a higher esteem among restorers, hands-down the 250SL is the rarest: based on both model years and production years.

Q4:

Answer: R230 SL 500.

While one may think it was the R107 450SL, the R230 SL 500 was the most popular SL by volume with 24,035 produced in 2002.

Q5:

Answer: 250 SL.

At 5,196 units the 250 SL is the rarest, compared to 19,831 230 SL's and 23,885 280 SLs produced. (The rare California hardtop models were not broken out in these production figures.)

Q6:

Answer: R107 280 SL.

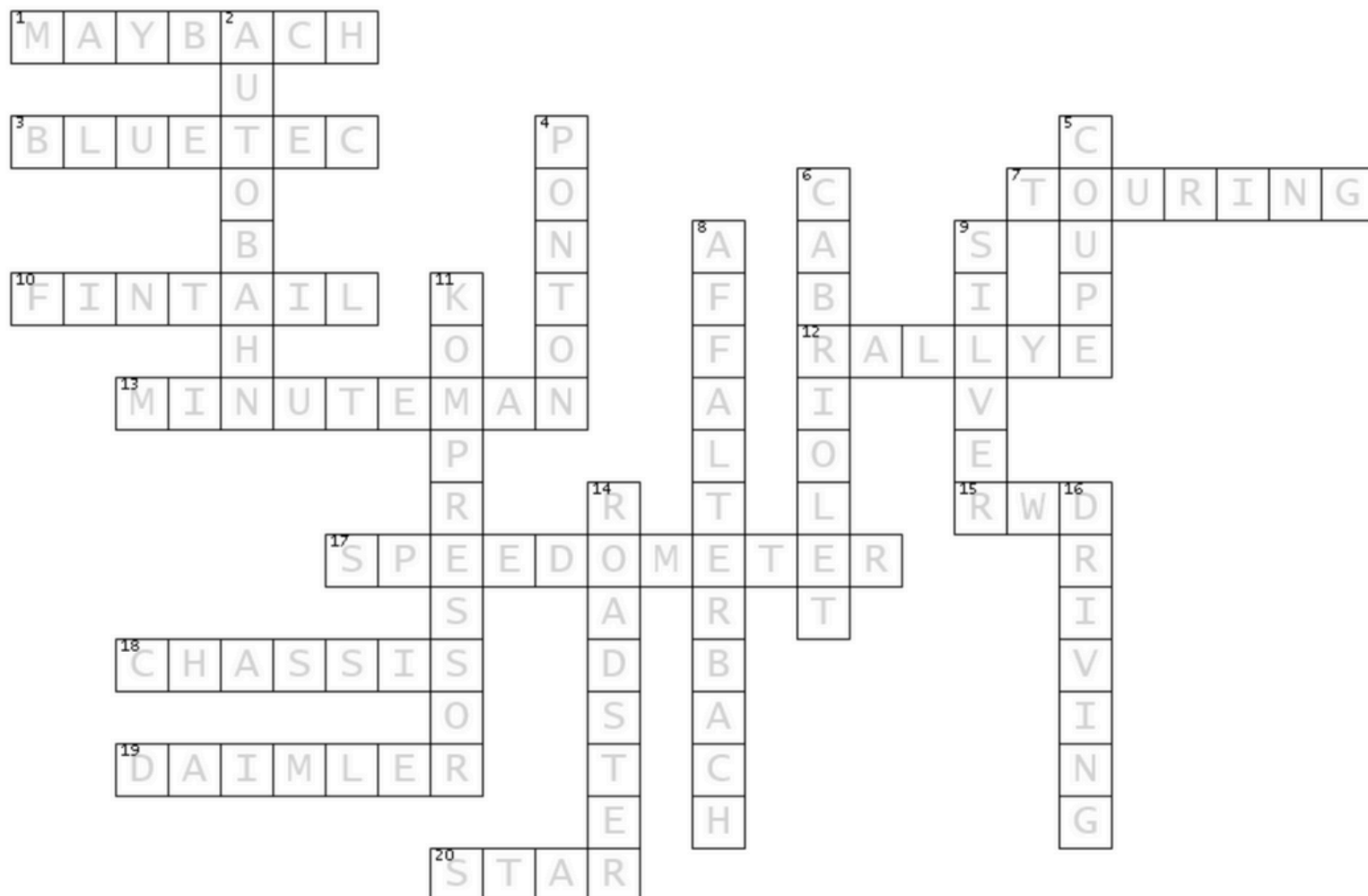
The R107 280 SL enjoyed a production life of 12 years! Made with a 2.8L 6-cylinder, it was one of the more popular SL models in Europe, where gas prices far exceeded that of the United States.

Q7:

Answer: R107.

From 1971–1989 the R107 SL enjoyed an amazing 19-year production run! (20 if you count the 3 350SLs produced in 1970, though these were most likely early press vehicles for the Geneva, Detroit, or New York auto shows to advertise the new R107!)

Answer Key: CROSSWORD PUZZLE



ACROSS

1. Ultra-luxury line of vehicles under the Mercedes-Benz brand.
3. Mercedes-Benz technology for clean diesel engines.
7. Long-distance driving for pleasure, often with a club.
10. Classic 1960s Mercedes-Benz sedan, named for its small rear design accents.
12. A spirited event where Mercedes-Benz enthusiasts gather for scenic drives and camaraderie.
13. New England club chapter sharing its name with a revolutionary militia member.
15. Drivetrain where the rear wheels do the pushing.
17. This dashboard instrument tells you how fast you're going.
18. The structural framework that supports the car's body and components.
19. The founding company of Mercedes-Benz, merged with Benz & Cie.
20. The iconic three-pointed _____ of Mercedes-Benz.

DOWN

2. German highway famous for sections with no speed limit.
4. Nickname for the rounded-body Mercedes-Benz models of the 1950s.
5. A car with a fixed roof, two doors, and often a sporty design.
6. The Mercedes-Benz term for a convertible.
8. AMG headquarters town, where performance engines are handcrafted.
9. Arrow: Legendary Mercedes-Benz race cars known for their sleek metallic finish (two words).
11. Mercedes-Benz term for a supercharged engine.
14. A sporty, open-top car built for two.
16. The joy is in the _____, not just the destination.

Exclusive offer for our members:

FOLLOW THIS LINK (OR CLICK THE IMAGE) FOR 5% OFF
YOUR FIRST ORDER WITH MCar COVERS!

Stock Up For Fall - Quantity Discounts



www.MCarCovers.com 888-627-1129

INTERESTED IN ADVERTISING WITH US?

The Minuteman Newsletter is a great way to get your business out to fellow club members by growing your referral base. Please feel free to reach out to the newsletter editor to get started!

Please direct advertising inquiries to:

Leia Owen
Phone: (781) 642-0664
hello@leiamowen.com

Members may run classified advertisements free of charge.

Send email changes to:
MBCA, National Business Office
1907 LeLaray St. Colorado Springs, CO 80909
Tel. 800-637-2360

Note to our current advertisers:

If you have an updated logo/graphic OR an image that is higher quality than those currently featured, please forward to:

Leia Owen
hello@leiamowen.com
Phone: (781) 642-0664

A black sports car, likely a Porsche Carrera GT, is parked on a brick driveway. The car is shown from the rear three-quarter view, highlighting its sleek design, rear spoiler, and distinctive five-spoke alloy wheels. The background features lush green bushes and a tree, while the foreground is filled with low-lying plants with yellow and orange foliage. The overall scene is set in a well-maintained garden or driveway area.

*Thanks for
reading!*

**WE HOPE TO SEE
YOU AT OUR
UPCOMING EVENTS**

Photo Courtesy of Denton Owen, @denton.drives