

ST. LOUIS GATEWAY SECTION NEWSLETTER



OUR SPONSORS:

Edward Jones.....	5
Reid Vann.....	5
Plaza Motor Company.....	8
Dents Express.....	9
Seniors Home Care.....	9
Mercedes-Benz of St. Louis.....	10
STL Auto Shield.....	12
Mercedes-Benz Star Access.....	13
Pro Tech Collision Center.....	15
Iceffect Restorations.....	16
Hyman LTD.....	18
It's Alive Automotive.....	18
Frontenac Detailing.....	20
National Auto Alliance	20



RIVER BOAT CRUISE, GRAFTON WINERY and FAST EDDIE'S GRAFTON HARBOR, GRAFTON, IL | SUNDAY, JULY 9TH

Last chance! The **Hakuna Matata** is filling up fast. If you'd like to join us on **Sunday, July 9th** for a leisurely cruise down the Mississippi River from Grafton to Chautauqua, please **RSVP to Joan Walsh at stljoan64@yahoo.com** and mail a check, made out to "MBCA, St. Louis Gateway Section" for \$25 per person to Joan Walsh at: **13301 Wood Creek Ct, St. Louis, MO 63141.**

We will meet at the Grafton Harbor (215 Water St.) at 9:00 am and set sail at 9:30 am for a private 1-hour cruise downriver, returning to Grafton.

We will then journey to the **Grafton Winery and Brewhaus** (300 W. Main St.) for some refreshments between 11:00 - 1:00. And finally, we will take the scenic drive down the Great River Road to **Fast Eddie's** in Alton (1530 E. 4th St.) where we will enjoy live music and tasty food. **Fast Eddie's is cash only.** Hope you can join us!



INSIDE THIS ISSUE:

Riverboat Cruise.....	1
President's Message & Leadership.....	2
MBCA Central Regional Event.....	6
Diamond Mineral Springs Restaurant...	7
'99 SL500 Summer Project.....	12
St. Louis European Auto Show.....	14
Classifieds & Upcoming Events.....	17
New & Returning Members.....	18
Events & Membership Application.....	19

MBCA Mission Statement:
To Elevate The Mercedes-Benz Experience Through Knowledge, Camaraderie, and Exceptional Events.

UPCOMING EVENTS PG.3

FALL PICNIC & CAR SHOW
CHESTERFIELD, MO | SUN., SEPT. 24TH

KNOLL'S FARM
FULTS/MAEYSTOWN, IL | SUN., OCT. 8TH

PRESIDENT'S MESSAGE

HELLO ST. LOUIS GATEWAY SECTION MEMBERS!



Once again, our St. Louis Gateway Section members were entertained with three recent Events! Craig Master-son hosted a unique and fun lunch at the **Diamond Mineral Springs Restaurant** in Grantfork, Illinois, and then followed it up with a visit to the **Copper Dock Winery**.

Despite the occasional rain, this year's **St. Louis European Auto Show** came off without a hitch. I greatly appreciated the assistance from fellow club members in setting up and taking down our tent and promotional items, along with the marketing of new members.

A visit to Nashville, Tennessee topped off our June activities, as club members from across the Central Region gathered together for "**Daimlers in the Music City**", a three-day extravaganza of enjoying much of what Nashville has to offer.

Our upcoming events are also assuredly going to be ones that you won't want to miss. We have a **River Boat Cruise, the Grafton Winery, and Fast Eddie's** on Sunday, July 9th, **Mercedes Grande**, our National MBCA Event, September 7th-10th, which is four days of Mercedes-Benz Culture, Causes, People, Lifestyle, Technology, and Cars, our always popular **Annual Fall Picnic**, September 24th, at Chesterfield Central Park, and a visit to **Ed & Tina Knoll's Farm**, October 8th in Fults, Illinois.

We presently have the month of August open for an event or activity. **Please let me know if you would be willing to host something for us in August.**

Your St. Louis Gateway Section is still looking for a Newsletter Editor. As you likely noticed, the current edition has a new look, as a template has been created, which should make future editions of the newsletter easier to put together. **If you may have an interest in possibly taking on this position for us, please contact me.** The job is not as difficult to handle as one might think.

Gute Fahrt Liebe Freunde (Have a Good Trip Dear Friends !)



2023 MBCA SAINT LOUIS GATEWAY SECTION Officers & Board Members

SECTION OFFICERS:

President Rick Siefert
rick.siefert@att.net
314.435.1903

Vice President Frank Perry
frankperry401@msn.com
314.839.4862

Secretary Luella Perry
brsholan@yahoo.com
314.839.4862

Treasurer Dana Faerber
ronfaerber@sbcglobal.net
314.434.4269

BOARD MEMBERS:

Patti Siefert
patti.siefert@att.net
314.378.0432

Jan Lupardus
jlupardus@charter.net
619.851.3422

Jonathan Leggs
(Webmaster and Membership Chair)
jleggs@gmail.com
314.809.3763
<http://stlgateway.mbca.org>
(SLGS website)

Newsletter Editor, OPEN

Alicia Monfrinotti
monfriusa@charter.net
314.369.8474

Central Region Director
Ken Koehler
skkoehler@att.net
317.919.4601

UPCOMING EVENTS

ANNUAL FALL PICNIC SHOW & SHINE CAR SHOW

CHESTERFIELD CENTRAL PARK, CHESTERFIELD, MO
SUNDAY, SEPTEMBER 24TH

Please plan to join us on **Sunday, September 24th**, as Frank & Luella Perry, John & Brenda Donovan, and Patti & Rick Siefert will be hosting our Annual Fall Picnic. Festivities will kick off at 1:00 and the food will be served around 2:00. **Chesterfield Central Park is located at 16365 Lydia Hill Drive, Chesterfield, MO.**

Our lunch menu will be all-inclusive. Drinks will include water, tea, lemonade, and of course, beer and wine.

Whether old or new, clean up and shine your favorite Mercedes for our Show & Shine! Trophies will be awarded to the three cars that gather the most votes by attendees.

To attend, please mail a \$18/person check, made payable to: **'MBCA, St. Louis Gateway Section', to Patti Siefert, 846 Nardin Drive, Chesterfield, MO 63017. RSVP to Patti at patti.siefert@att.net, NO LATER than September 17th, so that food and other arrangements can be finalized.**

We look forward to seeing each of you at what always proves to be an afternoon of fun and camaraderie **at one of our club's most well-attended events !**

A NOT-TO-BE-MISSED TRIP TO ED & TINA KNOLL'S FARM! FULTS/MAEYSTOWN, IL | SUNDAY, OCTOBER 8TH

On Sunday, October 8th, SLGS members, Ed and Tina Knoll, will be hosting an Event for us to Not-Be-Missed. They have invited us to visit the Farm that they own with their sons, Fritz and Alex, also members of our Club. The address for the Farm is 3524 Hern Drive, Fults, Illinois and is located between Fults and Maeystown, Illinois.

Located on the Farm is a restored 1900 New York Central wooden caboose that is actually livable, with AC, heat, kitchen, shower, etc. There is also a fishing lake and a shooting range. And....to top things off, Fritz has a retired German Anti-Tank helicopter. It is a Red Bull twin-engine Messerschmidt Bolkow Blohm BO-105 P1M, which actually carried six missiles.

The Knolls will be providing attendees with a lunch and for those interested, rides with Fritz in his helicopter! Arrival time will be mid to late morning, but specific further details will be included in upcoming email blasts, as we get closer to the event.

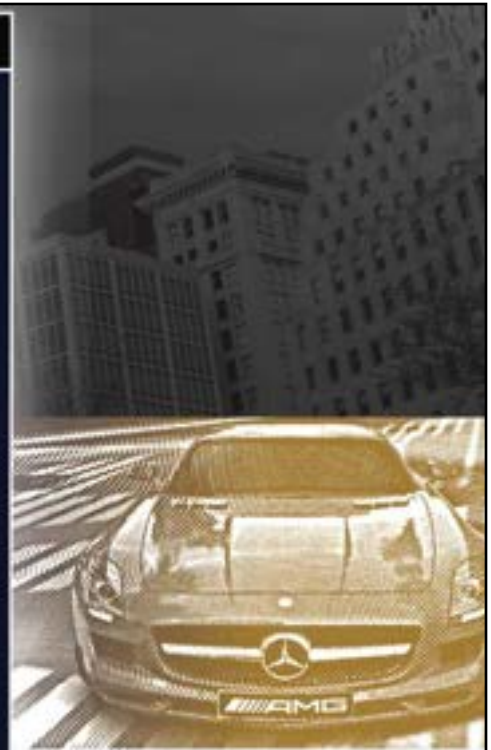
Cost is \$18/person and checks, made out to: "MBCA, St. Louis Gateway Section", are to be mailed to Ed Knoll at 11 Lindworth Lane, Ladue, MO 63124. RSVP NOW to Ed at 314-749-2105 or eknoll@acidpiping.com.



2023 MERCEDES GRANDE



INDIANAPOLIS



Thursday, 9/7

- Tech Talks & Guest Speakers
- MBCA Fashion Show/ Car Show & Luncheon
- Mercedes-Benz New Car Extravaganza and Lifestyle Exhibition

Friday, 9/8

- Tech Talks & Guest Speakers
- Rally Drives and Tours Presented by the Mercedes-Benz Club of America & Artomobilia
- MBCA Medallion Rally Luncheon
- Hullabaloo Street Festival, Drive-In Car Show, and Concert

Saturday, 9/9

- Mercedes Monumental Classic Car Show at Artomobilia
- The Grande Celebration Awards Dinner
- Kids Zone Exhibit Play Station & Driving Experience

Sunday, 9/10

- Rally Drives and Tours Presented by the Mercedes-Benz Club of America & Artomobilia
- Silo Auto Club Racing Simulator Challenge

September 7-10, 2023

A Celebration of all Things Mercedes-Benz

Four Days of Mercedes-Benz
Culture, Causes, People,
Lifestyle, Technology,
and Cars.

REGISTER NOW!



qrco.de/mercedesgrande
Save \$50 per person by purchasing
the VIP Ticket Package.



Hilton

HOTELS & RESORTS



BOOK YOUR STAY TODAY!



qrco.de/mghotel

We have partnered with Indianapolis Downtown Hilton Hotel & Suites to help accommodate you during your visit from start to finish. This is the host hotel for many of the Mercedes-Benz events, and they are nothing short of the best.

Access the MERCEDES BENZ CLUB OF AMERICA special rate of \$179.00 per person plus taxes. When you use promo codeGRANDE

We Understand Commitment

At Edward Jones, we deliver candid guidance and personalized investment strategies to help you plan for and realize the possibilities of your future – for you, your family and generations to follow.



Dan Valle, AAMS™
Financial Advisor
247 W Lockwood Ave
Webster Groves, MO 63119
314-961-1321

MAI-1952H-A © 2022 EDWARD D. JONES & CO., L.P. ALL RIGHTS RESERVED



Setting the Standard in Fine European Car Repair Since 1973
REID VANN LUXURY IMPORT SPECIALIST SERVICE & SALES

- Full-Service Mechanical Facility
- Bosch Certified Fuel Injection Repair Facility
- Scheduled Maintenance Services
- Extended Warranties Honored
- Aftermarket Parts and Accessories Available For Sale & Installation
- Track Event Preparation

9331 Manchester Road
St. Louis, MO 63119
314.968.4100
(1 block east of McKnight)
www.reidvann.com



MEMBER OF THE MERCEDES-BENZ, BMW, PORSCHE, AUDI, & FERRARI CLUBS OF AMERICA

MBCA CENTRAL REGIONAL EVENT “DAIMLERS IN THE MUSIC CITY”, NASHVILLE, TN | JUNE 15TH – 18TH



Ann Mudge and Anne Gilliland from the Bluegrass Stars Section, along with our Central Regional Director, Ken Koehler and his wife, Sara, hosted a fantastic event for our Region in Nashville, Tennessee, June 15th-18th. We had three full days of visits to the two MB dealerships in Nashville, a tour of historic Belle Meade and its winery, a visit to the eclectic Lane Motor Museum, dinner at the Bavarian Bierhaus, a visit and tour of the Uncle Nearest Distillery, and a couple of beautiful drives through the countryside around Nashville ! To top off a wonderful gathering, Joe & Joan Walsh and Patti & Rick Siefert hosted a Happy Hour Saturday evening enjoying the camaraderie that always exists with our MBCA members!



DIAMOND MINERAL SPRINGS RESTAURANT GRANTFORK, IL | SUNDAY, MAY 21ST

Craig Masterson, hosted an excellent event for us as members enjoyed a casual drive to the quaint town of Grantfork, Illinois and the Diamond Mineral Springs Restaurant, where we enjoyed family-style meals, famous “Foot-Hi” pies, and of course the camaraderie that always exists with our members. Departing Grantfork, we traveled to the Copper Dock Winery, which included great seating overlooking a scenic lake and live music.



Plaza Motors Company

11830 Olive Boulevard | Creve Coeur, MO 63141
(314) 266-5469 | PlazaMercedesBenz.com



A masterpiece of intelligence.

You don't measure a car's efficiency just at the gas pump. It's also something you feel in its confident agility. How it moves into traffic, or negotiates a surprise. It's how an E-Class always feels right for the times, and in the moment.

Mercedes-Benz



DENTS EXPRESS

WWW.DENTSEXPRESSL.COM

(636) 324-8361
13836 MANCHESTER ROAD
MANCHESTER, MO 63011



BEFORE & AFTER



*For reliable, compassionate, consistent in-home care,
choose Seniors Home Care.*



Helping seniors live independently in their homes since 1987.

- ✓ Companionship ✓ Meal Preparation ✓ Light Housekeeping
- ✓ Personal Care ✓ Transportation ✓ Medication Reminders



Kit Whittington RN, BSN
Founder - SHC

Ryan Whittington C.D.P., CEO
2nd Generation - SHC

314.962.2666 SENIORSHOMECARE.COM

Your New
Mercedes-Benz
is
Waiting

Mercedes-Benz of St. Louis



Mercedes-Benz of St. Louis
Highway 40 & Hampton
(314) 647-2400 • MBSTL.com

'99 SL500 SUMMER PROJECT BY SLGS MEMBER: JONATHAN FINE



A curious email dropped into my inbox recently from our President, Rick Siefert, asking if I was interested in a few Mercedes SLs that he knew were for sale. I love restoring older MBs so of course I said, "Yes!"

I met with club members, Kip & Kathleen Bilderback and ended up taking home a 1999 SL500 with a little over 200k miles on it. 200k+ miles may sound scary, but the car has dealer service records since new, and is so clean underneath that it looks like it had never seen salt. You can turn any bolt on this car. That said, it needed some mechanical fixes, and I've made good progress so far - its engine misfire codes are gone, after installing new valve cover gaskets, PCV hoses, oxygen sensors and ignition coils. Paint touch-up and a full detail with an exterior ceramic coating has the SL500 looking sharp. Only a few repairs are left until it is ready for plates. After that, who knows - a road trip sounds nice and is definitely in the plans!



**SAVE YOUR CAR FROM
ROCK CHIPS!!**



THE MASTERY OF PAINT PROTECTION FILM

314.717.1000

www.STLAUTO SHIELD.COM

The EQE Sedan.

The sedan of tomorrow. Available today.

\$2,500 Incentive¹

Purchase or lease the 2023 EQE Sedan, and receive a \$2,500 incentive¹ toward your down payment or cash due at signing. Additional \$7,500 Lease Bonus Cash² available on select EQ models leased through Mercedes-Benz Financial Services.



In the Mercedes-Benz EQE Sedan, every detail is designed for the senses. The touchscreen vibrates with haptic feedback, ambient lighting responds to driver assistance systems and night drives are illuminated by 1.3 million micro mirrors per headlamp. Plus, enjoy auditory excellence with the Burmester 3D Surround Sound System. Indulge your senses and elevate your driving experience with the Mercedes-Benz EQE Sedan.

For additional program details, please call Mercedes-Benz at 1-866-628-7232 or send an email to FleetOperations@mbusa.com.

Savings up to \$4,500¹

MY23 GLA SUV

From \$37,500³
SAVE \$1,000¹



MY23 CLA Coupe

From \$39,350³
SAVE \$1,000¹



MY23 GLB SUV

From \$39,800³
SAVE \$1,000¹



MY23 C-Class Sedan

From \$44,850³
SAVE \$500¹



MY23 EQB SUV

From \$52,750³
SAVE \$1,500¹



MY23 GLE SUV

From \$57,700³
SAVE \$500¹



MY23 EQE Sedan

From \$74,900³
SAVE \$2,500¹



MY23 EQS SUV

From \$104,400³
SAVE \$4,500¹



Mercedes-Benz
STAR ACCESS™

¹ Fleet incentives available only for qualified customers on certain MY23 Mercedes-Benz models. Not all engine variants are eligible for Fleet incentives. Please confirm with dealership if chosen vehicle is eligible for Fleet incentives at the time of purchase. Incentive must be used at time of purchase/lease. Incentives vary based on vehicle model as indicated. Eligible person must be the buyer/co-buyer or lessee/co-lessee. Star Access™ incentives cannot be used in conjunction with Diplomat, European Delivery, Special Demos, Certificate Programs, Mercedes-Benz Incentive Bonus Cash and other Fleet programs, or non-U.S. specification vehicles. Incentive amounts are subject to change on a monthly basis and should be confirmed with your dealer at the time of transaction. Amount of actual savings may vary depending on model selected. Offer expires July 5, 2023.

² \$7,500 Lease Bonus Cash available only on select eligible EQ models leased through Mercedes-Benz Financial Services (MBFS). Customers are not pre-approved and are subject to MBFS credit approval. Application of Lease Bonus Cash to deal structure may vary. Certain exclusions apply. See your participating Mercedes-Benz dealer for details. Offer expires July 5, 2023.

³ MSRP based on 2023 models. Suggested starting MSRP excludes all options, taxes, title, registration, transportation charge and dealer prep fee. Actual prices may vary by dealer.

Please note that these incentives can be combined with most, but not all, retail programs offered at the time of the transaction.

©2023 Mercedes-Benz USA, LLC

ST. LOUIS EUROPEAN AUTO SHOW ST. LOUIS, IL | SUNDAY, JUNE 11TH



Despite on and off “damp” weather, this year’s St. Louis European Auto Show came off without much of a hitch. In fact, we marketed six new memberships and are hopeful of bringing back two members from the past. And, our Section made a nice donation to the St. Louis ARC, which the Show has been in partnership with since 2016.

St. Louis Gateway Section members, Subash and Kathy Alias, took First Place honors in the Mercedes-Benz category with their beautiful red 1989 560SL





Our love for Mercedes-Benz is rivaled only by our passion for restoring them.

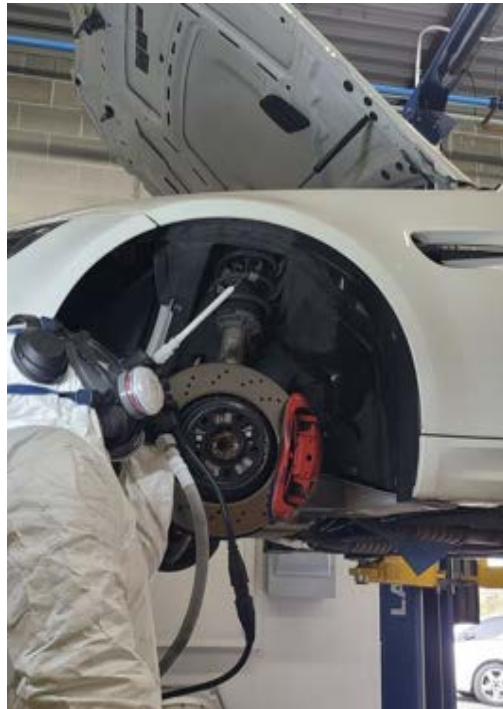
Specializing in Mercedes-Benz repair.

122 NORTH FIRST STREET
PACIFIC, MO 63069
PH: 636-271-6095

16360 TRUMAN ROAD
ELLISVILLE, MO 63011
PH: 636-422-1234

WWW.PRO-TECHCOLLISIONCENTER.COM

DRY ICE CLEANING



UNDERCARRIAGE • WHEELS • WHEEL WELLS • ENGINE BAY

A non-abrasive, highly efficient cleaning process that removes dirt, grime, debris, and undercoating from your exotic, collector, or future collector car.

Call us today to discuss goals for your next project - scan the QR codes below for more information, or email us at iceeffectrestorations@gmail.com.



4132 SHORELINE DR. SUITE J, EARTH CITY, MO 63045

PH 314.276.5314

ST. LOUIS GATEWAY SECTION

2023 EVENTS:

July 9th
Boat Tour, Grafton Winery & Fast Eddie's
 Alton, IL

August
 TBD

September 7th-10th
Mercedes Grande
 Indianapolis, IN

September 24th
Fall Annual Picnic
 Chesterfield Central Park, E. Pavilion

October 8th
Visit to Ed & Tina Knoll's Farm
 Fults, IL

November
Annual Planning Meeting

December 3rd
Holiday Party
 Greenbriar Hills Country Club



CARS AND PARTS FOR SALE

Audrey Biby has 3 SL's FOR SALE – a **2003 SL500**, only 31K miles! \$17,900 OBO, a **1996 SL500**, 110K miles, \$6900 OBO, & a 1982 380SL, 106K miles, \$2900 OBO. **Rick Siefert (rick.siefert@att.net)** for further information and pics.

C230 Compressor, 1999. Silver w/ grey (no rips) interior, always garaged, service records, no accidents, recent State inspection, perfect daily driver, 208K “easy” miles, \$3600 firm. **Gary Wilson, 314-662-6333.**

540K 1938 Cabriolet A. Claret over tan leather, ex Sir Peter Ustinov, ex John Bond, shown at Pebble Beach, beautiful older restoration. \$1,490,000. **Shawn Dougan (Hyman LTD) at shawn@hymanltd.com.**

300SC Cabriolet A, 1957. Dark red over Cognac, superb older restoration by Charles Brahms, one of 49 built. \$890,000. **Shawn Dougan (Hyman LTD) at shawn@hymanltd.com.**

380SL, 1982. Silver-Blue Metallic over blue leather, 1600 miles since new, absolutely original, books, tools, and original window sticker. \$96,500. **Shawn Dougan (Hyman LTD) at shawn@hymanltd.com.**

FREE CLASSIFIED ADS TO ST. LOUIS GATEWAY SECTION MEMBERS

If you would like to place an advertisement, please mail or e-mail it by the 15th of the month to:

Rick Siefert at rick.siefert@att.net
846 Nardin Drive, Chesterfield, Missouri 63017

2024 MERCEDES-BENZ E-CLASS WAGON Car & Driver, Published June 20, 2023

Entering an all-new generation alongside its sedan sibling, the E-Class wagon will have more technology and luxury than the last iteration. Expect a full revision inside and out with power-trains borrowed from the sedan, likely including the 375-hp 3.0 liter inline-six hybrid.

Obviously, there are no pricing details for the Mercedes-Benz wagon yet, but the new generation and its vast makeover will certainly be reflected in the starting price for this niche car. We think Mercedes will continue to offer the E450 in All-Terrain guise only, skipping out on a non-cladded version, unless they decide to go all-in with a high-horsepower AMG E63 model.



Results

Successful transactions have happy buyers... and sellers.



Make us your first call

HYMAN LTD.
INTERNATIONAL MERCHANTS OF EXCEPTIONAL MOTOR CARS

314-524-6000 / www.hymanltd.com

2019 Copyright Hyman Ltd - St. Louis, Missouri



11714 ST. CHARLES ROCK ROAD
ST. LOUIS • MO • 63044

*Intersection of Hwy70 and St Charles Rock Road
1 mile west of the airport*

CONTACT JEFF HOMSHER AT:
(314) 348-5774
or
JEFF@ITSALIVEAUTO.COM
VISIT US AT
<ITSALIVEAUTO.COM>

- FROM SIMPLE REPAIRS to ROTISSERIE RESTORATIONS
- STATE-OF-THE-ART EQUIPMENT & OVER 70 YEARS EXPERIENCE
- AFFORDABLE RATES : \$75.00/HR
- CONVENIENT PICKUP & DELIVERY
- EXTENSIVE RUST REPAIR & FABRICATION
- INTERIOR/ CONVERTIBLE TOP REPAIR/REPLACEMENT

HIGH QUALITY, GREAT VALUE & TOTAL CONVENIENCE



WE'VE RESTORED NUMEROUS 190SL & 280SL MERCEDES & CURRENTLY HAVE 7 IN STOCK

PLEASE WELCOME OUR NEW MEMBERS

Since the last publication of the Gateway News, we are proud to announce and WELCOME the following new members:

Robert Duddy
Robert & Stacy Horner

Richard Lewis
George Oranski

Kimberly Porter & Dion Fox

Welcome to the St. Louis Gateway Section of the Mercedes-Benz Club of America.

We have over 220 memberships within a 200-mile radius of St. Louis.

The success of our Club depends on the participation of the members to our scheduled activities. Thank you for joining. We look forward to seeing you at our next event.

LOYAL RENEWING MEMBERS

William & Jamie Anderson
Prabhakara Bhogavalli
Tom & Tricia Brockhaus
Robert Colton & Dana Fulton

P. Antoine & Crystal Dallas
Paul Felsch
Kevin Guss

Peter & Julie LeBlanc
Keith Pharis
Craig Spencer

Thank you for your continued support of our club!

Don't see your "significant other" listed? Then you may not have entered them as associate members with MBCA when you joined. It costs nothing to make them associate members. Simply log on to your MBCA account, scroll down to "Associate Member", click on "Edit", and enter the name. That's it.

MBCA MEMBERSHIP APPLICATION

PLEASE PRINT CLEARLY

Full name: _____ Associate member (spouse or dependant): _____
Address: _____ City: _____ State: _____ Zip: _____
Home phone: (____) _____ Business phone: (____) _____ E-mail address: _____

Occupation: _____

Mercedes-Benz now owned (model/year, list additional cars elsewhere)

New Member Renewing Member (check one) If renewing, member number: _____

Interests: please check one

Driving Events Cars Shows Car Care Technical Social Events *The Star*

Enroll me as a member for (check one) U.S.:

1 year (\$55) 2 years (\$107) 3 years (\$157) *Make check payable to MBCA (U.S. funds only); Visa or Mastercard also accepted.

International (including Canada):

1 year (\$65) 2 years (\$127) 3 years (\$187)

*Canadians and overseas: Visa, Mastercard, American Express, Discover, international money orders or checks payable in U.S. funds.

Applicant's signature: _____

Date: _____

Applicant's section preference (see list in magazine): _____

Sponsor's signature and member number (optional): _____

Membership dues includes six issues of *The Star* magazine yearly. If using a credit card, please complete the following

Visa Mastercard Am. Express Discover Account number: _____ Exp. date: _____

MBCA, 1907 Lelaray St., Colorado Springs, CO 80909-2872 (719) 633-6427, M-F 8AM TO 5PM (MT)



Frontenac Detailing

Automotive appearance specialists



www.FrontenacDetailing.com



**Complete Premium Detailing • Paint Correction • Ceramic Coatings
Service All Makes & Models • Complementary Shuttle
All Work Done at Honda of Frontenac**

885 S. Lindbergh
Frontenac, MO 63131
Call orText 314-226-7411



Choose Your Mercedes Dealer

Whether you have a small breakdown or need major repairs, NAA has got your back.

Use your local Mercedes Benz Dealer or any ASE Certified facility of your choice!



National Auto Alliance

314-936-5595

www.nationalautoalliance.com



Quality Service

You can always feel confident when you're working with us. We offer the best customer service and peace of mind for your vehicle.

Our coverage specialists listen to your needs and provide the best protection available.

Your satisfaction means everything to us!

WWW.MBCA.ORG or 800-637-2360